



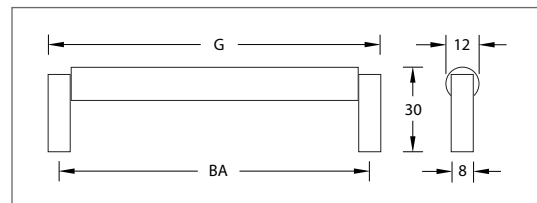
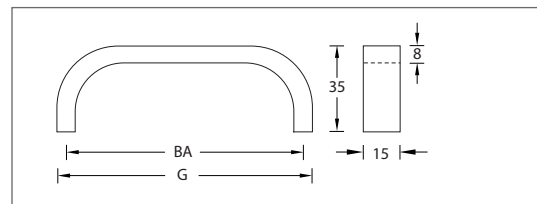
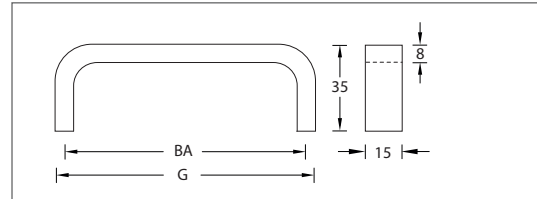
Design-Möbelgriffe MG 15-8, DR1787, Q-Soc

Werkstoff: Messing

WEBCODE: CROD MG 15-8

WEBCODE: AEDY DR 1787

WEBCODE: LFTD Q - Soc



Messing poliert





Messing matt



Messing matt vernickelt




Messing Chrom poliert

MG 15-8, DR 1787		Größe	BA	Bestell-Nr.	Bestell-Nr.	Bestell-Nr.	Bestell-Nr.
	Möbelgriff MG 15-8, Gewindetiefe 10 mm, inkl. Schrauben M 4.	104 mm	96 mm	54.20.03	54.20.04	54.20.06	54.20.07
		136 mm	128 mm	54.21.03	54.21.04	54.21.06	54.21.07
		168 mm	160 mm	54.22.03	54.22.04	54.22.06	54.22.07
	Möbelgriff DR 1787, Redesign nach Abraham & David Roentgen, Gewindetiefe 10 mm, inkl. Schrauben M 4.	104 mm	96 mm	54.10.03	54.10.04	54.10.06	54.10.07



Messing poliert

Q - Soc		Größe	BA	Bestell-Nr.
	Möbelgriff Q - Soc, Sockel 8 x 8 mm, Gewindetiefe 10 mm, inkl. Schrauben M 4.	104 mm	96 mm	116.50.30
		136 mm	128 mm	116.50.31
		168 mm	160 mm	116.50.32
		200 mm	192 mm	116.50.33
		232 mm	224 mm	116.50.34
		264 mm	256 mm	116.50.35
		296 mm	288 mm	116.50.36
		328 mm	320 mm	116.50.37