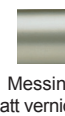
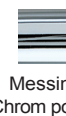
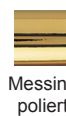
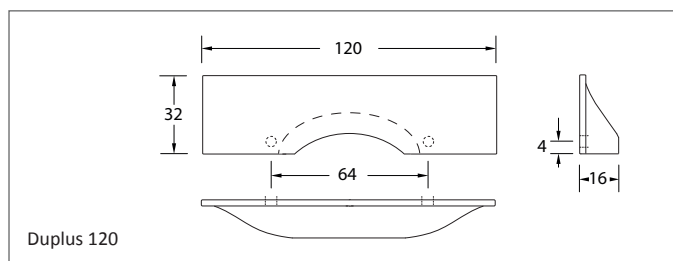
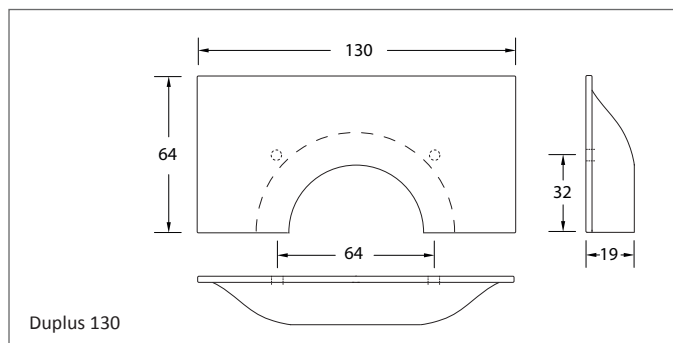






Design-Möbelgriff Duplus
 Werkstoff: Messing
 Befestigung: Gewinde M 4

WEBCODE: LBSW



Duplus	Größe	BA	Bestell-Nr.	Bestell-Nr.	Bestell-Nr.
 Möbelgriff Duplus 130, zum Anschrauben, Gewindetiefe 7 mm, inkl. Schrauben M 4.	130 x 64 mm	64 mm	48.83.03	48.83.07	48.83.06
 Möbelgriff Duplus 120, zum Anschrauben, Gewindetiefe 6 mm, inkl. Schrauben M 4.	120 x 32 mm	64 mm	48.85.03	48.85.07	48.85.06

Optionen auf Anfrage:

Informationen

	Messing poliert vernickelt
	Messing matt
	Messing matt verchromt

